

Symmetry Dispensers vs. Bulk Fill Dispensers

Hand washing is one of the best ways to prevent the spread of bacteria and germs, but what if your soap is already contaminated?

Bulk-Fill Dispensers Subject to Contamination

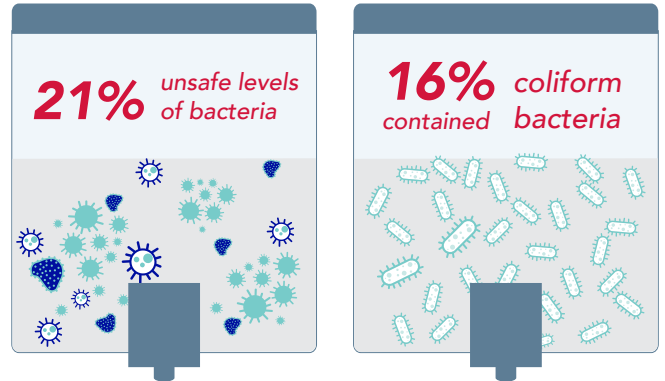
Washing your hands using bulk fill soap can be one of the least hygienic ways to wash your hands.

Dr. Charles Gerba, Professor of Environmental Microbiology at the University of Arizona, conducted a study on bulk-fill dispensers to determine levels of contamination.

Findings: Out of 541 soap samples from around the U.S., 21% had unsafe levels of bacteria and 16% contained coliform bacteria which are fecal based and can cause illness.

<https://aem.asm.org/content/77/9/2898>

Study Findings: Out of 541 soap samples



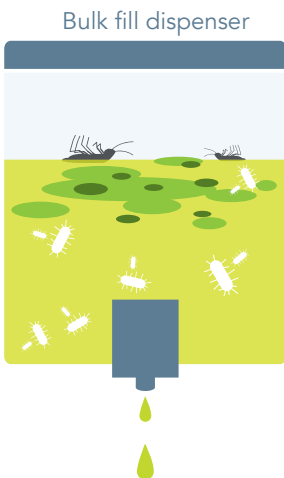
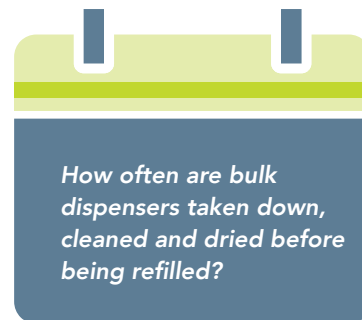
“ Do not add soap to a partially empty soap dispenser. This practice of ‘topping off’ dispensers can lead to bacterial contamination of soap. ”

– Centers for Disease Control and Prevention (CDC)

Bulk Fill Dispenser Maintenance

CDC Guidelines for Proper Bulk Fill Dispenser Maintenance:

1. Remove the reservoir from the dispenser.
2. Dump the remaining soap in the reservoir down the drain.
3. Wash out the empty reservoir with soap and water.
4. Replace the reservoir in the dispenser.
5. Refill the soap reservoir with fresh product.



Symmetry Hermetically Sealed Bags

Symmetry's bags are designed to evacuate 99.9% of the product, ensuring no waste. They are hermetically sealed to prevent contamination.

No bacteria
No bugs
No contamination





Patented No-Drip Bellow System

No Dripping

Symmetry Reduces Soap Waste

When dispensers leak, soap builds up on and around the pump, creating another breeding ground for bacteria. Symmetry offers a true “no-drip” system. At the base of each Symmetry soap pump, there is a bellows (only on foam pumps) that prevents leaking or dripping. As you press the lever, the bellows is compressed and soap is dispensed.

Symmetry Prioritizes Sustainability

Symmetry packaging materials are designed to reduce environmental impact by incorporating recycled and post-consumer materials, and using lightweight flexible bags that reduce material use compared with rigid packaging.



Symmetry outer box packaging is made of 41% recycled materials.



35% of Symmetry inner carton packaging is made of minimum post-consumer material diverted from the waste stream at the end of its intended lifecycle.

Symmetry

2700 Wagner Place • Maryland Heights • MO 63043
800.321.2583 • www.symmetryhandhygiene.com